

## AUZ 01 - stainless steel wall-hung WC pan



AUZ 01 is a stainless steel wall-hung WC pan without automatics. A set with an AUZ 3 automatic flushing system and KZ 1 cantilever, or with an AUZ 5 (in-wall toilet module) flushing system can be completed. The AUZ 3 and AUZ 5 flushing systems and KZ1 cantilever need to be ordered separately. Automatic flushing systems use photocell sensor for contactless control. After leaving the scanning zone the flushing system is activated. The AUZ 01 assembly inlets are the same as for any commonly used ceramic closet. Because of its high resistance to damage, the AUZ 01 is intended mainly for social facilities with expected higher loads, such as highway lay-bays, public houses etc. where easy hygiene maintenance is required ? with use of the AUZ 3 flushing system for maximum water savings. AUZ 01 is manufactured from the stainless steel AISI 304. Other materials (e.g. AISI 316) possible on order. For cleaning we recommend WÜRTH detergents ? material preservation (no. 0893 121 K) and material cleaning (no. 893 121 1).

Rating: Not Rated Yet

[Ask a question about this product](#)

Manufacturer: [AZP Bmo](#)

Description AUZ 01 is a stainless steel wall-hung WC pan without automatics. A set with an AUZ 3 automatic flushing system and KZ 1 cantilever, or with an AUZ 5 (in-wall toilet module) flushing system can be completed. The AUZ 3 and AUZ 5 flushing systems and KZ1 cantilever need to be ordered separately. Automatic flushing systems use photocell sensor for contactless control. After leaving the scanning zone the flushing system is activated. The AUZ 01 assembly inlets are the same as for any commonly used ceramic closet. Because of its high resistance to damage, the AUZ 01 is intended mainly for social facilities with expected higher loads, such as highway lay-bays, public houses etc. where easy hygiene maintenance is required ? with use of the AUZ 3 flushing system for maximum water savings. AUZ 01 is manufactured from the stainless steel AISI 304. Other materials (e.g. AISI 316) possible on order. For cleaning we recommend WÜRTH detergents ? material preservation (no. 0893 121 K) and material cleaning (no. 893 121 1).

Complete delivery

1. stainless steel WC pan including plastic seat
2. anchoring material

Requirements for setting up the construction

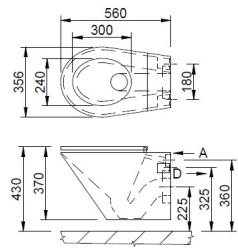
1. Water installation set up as per picture
2. Set-up alcove for installation casket (only for AUZ 3)
3. Set-up cable for power supply ? 12 V, 50 Hz from source of power supply ZAC (only for AUZ 3)
4. Set-up outlet d = 90 mm as per picture
5. Set-up the cantilever or other system for hanging the WC pan

Download information about the product

- [AUZ 01 data for projectants - \( 34 kB \)](#)

Basic technical information	Water inlet	d = 34 mm
	Minimum water flow capacity	70 l/min.
	Outlet	d = 90 mm
	Required spacing between bolts	180 mm
	Weight	18 kg

Figures



Reviews

There are yet no reviews for this product.