

## BSAU 03.2 - anti-vandal wash basin mixer for hot and cold water (inlcuding T-mixing valve)



BSAU 03 is a built-in safety wash basin mixer designed to be built-in the wall. The user controls temperature of running water by a thermostatic valve provided with stainless anti-vandal cover. Stainless spout arm is made of 2 mm thick material to be highly resistant to damage. Basic cover sheet of 3 mm thick steel plate is screwed by safety bolts to a built-in box with fittings. Mixer is controlled by a stainless button. After the button is pressed the user is provided pre-set amount of water. Water can be turned on after the button is pressed once again. If the button was purposefully arrested in pressed position, water would stop running after the first cycle. Water dosing can be set by facility keeper. BSAU 03 is manufactured from the stainless steel AISI 304. Other materials (e.g. AISI 316) possible on order. For cleaning we recomnend WÜRTH detergents ? material preservation (no. 0893 121 K) and material cleaning (no. 893 121 1).

Rating: Not Rated Yet

[Ask a question about this product](#)

Manufacturer: [AZP Brno](#)

Description BSAU 03 is a built-in safety wash basin mixer designed to be built-in the wall. The user controls temperature of running water by a thermostatic valve provided with stainless anti-vandal cover. Stainless spout arm is made of 2 mm thick material to be highly resistant to damage. Basic cover sheet of 3 mm thick steel plate is screwed by safety bolts to a built-in box with fittings. Mixer is controlled by a stainless button. After the button is pressed the user is provided pre-set amount of water. Water can be turned on after the button is pressed once again. If the button was purposefully arrested in pressed position, water would stop running after the first cycle. Water dosing can be set by facility keeper. BSAU 03 is manufactured from the stainless steel AISI 304. Other materials (e.g. AISI 316) possible on order. For cleaning we recomnend WÜRTH detergents ? material preservation (no. 0893 121 K) and material cleaning (no. 893 121 1).  
Complete delivery

1. Installation box with electromagnetic valve, bolting and electronics
2. Cover sheet with spout arm, TV and stainless button

Requirements for setting up the construction

1. Set up alcove for installation 300 x 200 x 80 mm
2. Set up cable for power supply 12 V, 50 Hz (ZAC)
3. Set up water inlet according to the technical drawing

Download information about the product

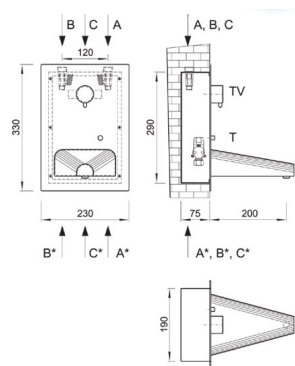
- [BSAU 03 data for projectants - \( 31 kB \)](#)

Basic technical informationFront panel dimensions  
Length of spout arm

330 x 230 mm  
200 mm

Power supply	12 V, 50 Hz
Power input	max. 6 VA
Water pressure	0,1 - 1 MPa
Adjustable time of water flow	1 s - 250 s in 1 s steps

Figures



Reviews

There are yet no reviews for this product.