

AUM 018 INV - low stainless steel washbasin for handicapped people



AUM 018 is a stainless steel wash basin with side rails designed for public facilities for handicapped people. Design of the washbasin enables easy use for people on wheelchair. Included are two side rails and robust fixing construction. The wash basin contains welded-on stainless waste trap positioned in the rear to take up as little space as possible and to resist to unwilling or intentional damage. The wash basin is supplied without tap and is equipped by a hole for pillar mixer as a standard. It can also be delivered without the hole ? for a wall mixer. The wash basin is made of 1.5 and 2 mm thick material with robust brackets to hold the wash basin. The AUM 018 INV stainless steel washbasin, in its construction and finish, meets EU standards. AUM 018 INV is manufactured from the stainless steel AISI 304. For cleaning we recommend WÜRTH detergents ? material preservation (no. 0893 121 K) and material cleaning (no. 893 121 1).

Rating: Not Rated Yet
[Ask a question about this product](#)

Manufacturer: [AZP Brno](#)

Description AUM 018 is a stainless steel wash basin with side rails designed for public facilities for handicapped people. Design of the washbasin enables easy use for people on wheelchair. Included are two side rails and robust fixing construction. The wash basin contains welded-on stainless waste trap positioned in the rear to take up as little space as possible and to resist to unwilling or intentional damage. The wash basin is supplied without tap and is equipped by a hole for pillar mixer as a standard. It can also be delivered without the hole ? for a wall mixer. The wash basin is made of 1.5 and 2 mm thick material with robust brackets to hold the wash basin. The AUM 018 INV stainless steel washbasin, in its construction and finish, meets EU standards. AUM 018 INV is manufactured from the stainless steel AISI 304. For cleaning we recommend WÜRTH detergents ? material preservation (no. 0893 121 K) and material cleaning (no. 893 121 1).
Complete delivery

- 1. st. steel washbasin with fixing console
- 2. small fixing material

Requirements for setting up the construction

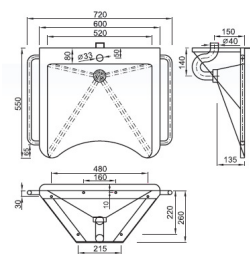
- 1. Set up outlet d = 40 mm according to the scheme

Download information about the product

- [AUM 018 INV data for projectants - \(32 kB \)](#)

Basic technical information	Outlet	d = 40 mm
	Weight	10 kg

Figures



Reviews

There are yet no reviews for this product.